



VIRGINIA MARITIMER

January-February 2008

THE MAGAZINE OF THE PORT OF VIRGINIA



OPERATING ON EARNINGS, BENEFITING EVERY VIRGINIAN.

VPA LEADERSHIP

Commonwealth of Virginia	Mark B. Goodwin	Executive Management	David James <i>Director, Contracts and Real Estate</i>	VPA Main Office 600 World Trade Center Norfolk, VA 23510 Phone (757) 683-8000 Toll free (800) 446-8098 www.vaports.com
Tim Kaine <i>Governor</i>	Allen R. Jones, Jr.	Jerry A. Bridges <i>Executive Director</i>		
Pierce Homer <i>Secretary of Transportation</i>	Michael J. Quillen	J.J. Keever <i>Deputy Executive Director</i>	Heather L. W. Mantz <i>Director, Environmental Affairs</i>	
Board of Commissioners	Ranjit K. Sen	Thomas Capozzi <i>Senior Managing Director of Marketing Services</i>	Ed Merkle <i>Director of Port Security and Emergency Operations</i>	
John G. Milliken <i>Chairman</i>	Thomas M. Wolf	Andrew H. Engemann, Jr. <i>Chief of Police</i>	Rodney Oliver <i>Director, Finance</i>	
Robert C. Barclay, IV <i>Vice Chairman</i>	Deborah K. Stearns	Jeff Florin <i>Chief Engineer Director, Port Development</i>	Elaine Smith <i>Director, Human Resources</i>	
Marty Barrington	J. Braxton Powell <i>State Treasurer</i>	Linda G. Ford <i>Director, Port Promotion</i>		
Stephen M. Cumbie	Rodney Oliver <i>Treasurer</i>			
Joe B. Fleming	Debra McNulty <i>Clerk Secretary</i>			
	Jodie Asbell <i>Deputy Clerk</i>			

What is the Virginia Port Authority?

The Virginia Port Authority (VPA) is an agency of the Commonwealth of Virginia, reporting to the state Secretary of Transportation. The VPA owns and operates four general cargo facilities on behalf of the state: Norfolk International Terminals, Portsmouth Marine Terminal, Newport News Marine Terminal and the Virginia Inland Port in Warren County. The terminals are operated by Virginia International Terminals, Inc. (VIT), the non-stock, non-profit operating company of the VPA. The VPA, through terminal earnings generated by VIT, is operationally self-sufficient.



One Stop. America and the World.

Guidelines For Submissions To The Maritimer

To submit information for Port Profiles, Currents and Agenda, e-mail information to Virginia Maritimer Editor, jdenton@vaports.com, or fax to (757) 683-2897.

All information is subject to editing. Photos are welcome but cannot be returned unless they are accompanied by a self-addressed, stamped envelope. Please label photos on back with the person's name and company or a description of the photo.

Published by the Virginia Port Authority's Department of Port Promotion, the Virginia Maritimer contains international trade development news pertaining to The Port of Virginia and is distributed free on a controlled basis to 10,000 maritime, industrial, transportation and business readers in the United States and 60 countries abroad.

For permission to use or reproduce the information contained herein, contact the Virginia Port Authority, Department of Port Promotion. Credit should be given to the Virginia Port Authority. A copy of the publication containing the material is requested.

Additional information may be obtained by writing to the Maritimer editor at the Virginia Port Authority, 600 World Trade Center, Norfolk, VA 23510.

Telephone: (757) 683-8000 or (800) 446-8098 in the continental U.S. and Canada. Fax: (757) 683-2897.

Port Promotion Staff

Linda G. Ford <i>Director, Port Promotion</i> lford@vaports.com	Joe Harris <i>Program Manager Media Relations</i> jharris@vaports.com	Hilda H. Clifton <i>Administrative Assistant</i> hclifton@vaports.com
Carla Welsh <i>Program Manager</i> cswelsh@vaports.com		
Jake Denton <i>Program Manager Editor, Virginia Maritimer</i> jdenton@vaports.com		Ellen Levy-Cohen <i>Office Assistant</i>

CONTENTS

Port Spurs Job Growth New study details increased role The Port plays in creating jobs and revenue throughout the Commonwealth	2
Building for the Future A number of projects designed to increase capacity at The Port of Virginia are well underway, including Craney Island, terminal renovations and the Heartland Corridor	4
The Port at Work Part One in a series of photographic essays exploring the employment impact of The Port of Virginia.	6
Elizabeth River Project receives over \$1 million in EPA grants VPA recognized as Model Level River Star for fourth consecutive year, receives award for Sustained Distinguished Performance	10
Security Upgraded at Terminals New situational response system enhances VPA police capabilities	12
VPA, Wallenius Wilhelmsen Logistics Sign Contract Five-year deal secures roll on/roll off cargo	13
Tradewinds	14
Profiles	17
A Look Back	18
Services Directory	21

A CLOSER LOOK

Dee Myers (left), project manager for E.V. Williams Company Inc., and Rocco Lassiter, vice president of subcontractor Lasting-Coastline Inc., oversee construction work at Norfolk International Terminals. Please see page 6 for more images of their crew at work. This will be the first part in an ongoing series called "The Port at Work," which will chronicle different types of jobs The Port of Virginia creates.





Port Spurs Job Growth

New study details increased role The Port plays in creating jobs and revenue throughout the Commonwealth.



Construction worker Mike Seymore and members of the International Longshoremen Association at work at Norfolk International Terminals. In total, The Port of Virginia produces and facilitates 9 percent of the state's resident workforce.

The Port of Virginia's three general cargo marine terminals in fiscal 2006 accounted for more than 340,000 jobs across the Commonwealth and in excess of \$41 billion in total revenues, says an economic impact study that was recently completed by the Mason School of Business at the College of William & Mary.

"This comprehensive look at what this port means to Virginia validates all of the day-to-day hard work, the continual planning, the capital spending program and the push to modernize and expand our facilities," said Jerry A. Bridges, executive director of the Virginia Port Authority. "This report measures the value of the work done here in a single year, but we didn't get to that year overnight. Let's remember that there is still a lot of work ahead of us; the Craney Island Marine Terminal project will drive these numbers even higher. I'm proud of these results and very excited about what the future holds."

The economic activity produced or facilitated by operations at The Port of Virginia in fiscal 2006 is as follows:

- Total revenues of \$41.1 billion;
- Employee compensation of \$13.5 billion, or 7.4 percent of the total compensation paid to private sector, state and local government employees;
- 343,000 jobs, or 9 percent of the state's resident workforce;
- Local income, sales and real property taxes of \$1.2 billion, or \$1 out of every \$18 raised by those three government revenue sources.

The report measured The Port's impact for fiscal 2006 on three levels: direct, indirect and induced. All three of these pieces of data were combined to create the total impact figures for total revenue, employee compensation, jobs and taxes.

- **Direct impact:** The production and sale of the commodity being analyzed that includes all service providers involved in moving exports and imports through the VPA terminals.
- **Indirect impact:** Purchases from other businesses to carry out the direct activities; business-to-business transactions with suppliers for everything from electricity to paper to professional services.
- **Induced impact:** The earnings created by direct and indirect impacts that are spent by households, businesses and state and local governments.

The research team modeled the impacts using IMPLAN, which is an interactive model that uses government data about national, state and local production of commodities and market transactions. The inputs also included information on non-market financial flows to and from state and local government and other specific local and state information.

The research team, all from the Mason School of Business, is composed of Dr. Roy L. Pearson, chancellor professor emeritus, who specializes in economic forecasting; Dr. James R. Bradley, an associate professor who specializes in engineering, supply chain management and lean manufacturing; Dr. K. Scott Swan, an associate professor of international business and marketing; and Dr. Hector H. Guerrero, an associate professor who teaches decision making, statistics, general management and business quantitative methods.



“It’s a great day for Virginia, the port and the nation,” J.J. Keever, the VPA’s deputy executive director, said after Congress allocated the funds for Craney Island.

Building for the Future

A number of projects designed to increase capacity at The Port of Virginia are well underway, including Craney Island, terminal renovations and the Heartland Corridor.

Entering 2008 with a full slate of infrastructure improvement projects on or ahead of schedule, The Port of Virginia continues to plan for the future. As global trade grows – marked by a nationwide upsurge in exports – many ports face a looming problem: more business than they can handle without room to expand. While The Port of Virginia continues to operate near capacity, sound long-term growth plans ensure that the Commonwealth’s marine terminals will continue to drive economic growth throughout the state in coming years and decades.

Improvements underway at The Port of Virginia include planning and funding Craney Island Marine Terminal, extending the wharf at NIT North to make room for three more cranes, redesigning the NIT railyard and reconfiguring the container backlands at NIT, continuing construction to improve the Heartland Corridor and a number of other projects.

On November 8, 2007, Congress overturned President Bush’s veto and signed legislation authorizing \$356.1 million in federal funding for developing a marine terminal on Craney Island. This authorization of the Water Resources Development Act marked the first time Congress had overridden a veto by President Bush and just the 107th time a presidential veto has been overturned in history.

Craney Island Marine Terminal represents the future of

The Port of Virginia. With a total estimated cost of \$2.2 billion, the facility will enable The Port to keep up with booming international trade, which is projected to double or even triple in the next 10 to 20 years. Preliminary engineering for the 580-acre terminal is underway, with groundbreaking scheduled in 2009 and a grand opening slated for 2017.

“It’s a great day for Virginia, the port and the nation,” J.J. Keever, the VPA’s deputy executive director, said after Congress allocated the funds for Craney Island.

Meanwhile, to accommodate immediate demands for increased capacity, the north wharf extension at NIT is 69 percent complete and scheduled to be finished this summer. The \$35 million project will lengthen the wharf by 900 feet and provide space for three additional container cranes.

The container cranes are being constructed by ZPMC in China. They will be transported to Virginia fully assembled and erect atop a specially designed ship this June. In December, VPA Executive Director Jerry Bridges and Engineering Director Jeff Florin paid a visit to ZPMC while on a business trip to Shanghai. The cranes are being built to match the same dimensions as the existing three cranes at NIT North, which were also constructed by ZPMC.

Another project slated for completion this summer is the relocation and expansion of the centralized railyard at NIT.

This improvement will increase capacity for rail moves, the fastest-growing business sector at The Port of Virginia. A \$17 million project designed by TranSystems and contracted to H&B Railroad Company, the rail improvements are currently 35 percent complete.

Also at NIT, a dedicated route for shuttle carriers is being built between NIT North and the central railyard. Work is being done by E.V. Williams Company Inc. and is scheduled for completion this August.

At NIT South, backlands reconstruction is progressing steadily, with more than 50 percent of the work complete. Also being done by E.V. Williams, this project will renovate 150 acres of the NIT South Container Yard, modernizing operations to accommodate straddle carriers, which have replaced the “hustlers” used to move containers.

On Terminal Boulevard, outside NIT, a new 25,000-square-foot office building has been completed at a cost of \$5 million. This building will house Virginia International Terminals employees, freeing space at NIT when administrative workers move off terminal this spring.

At Newport News Marine Terminal, a new 200,000-square-foot warehouse building is being constructed to relocate bulk storage operations from NIT to NNMT. This project is 60 percent done and will be finished this summer.

One of the most significant improvements to The Port of Virginia is known as the Heartland Corridor project. When completed, this work will provide double-stacked container trains a more direct route from Virginia to Midwest markets such as Chicago. By heightening 28 tunnels in Virginia, West Virginia and Kentucky, as well as removing or modifying 24 overhead obstructions, this \$266 million Norfolk Southern project will allow The Port of Virginia to provide more competitive rates for Midwest rail business.

Part of the Heartland Corridor initiative is called the Commonwealth Railway Mainline Safety Relocation Project. This work will eliminate the potential for rail-related accidents at 13 at-grade crossings in the city of Portsmouth by relocating the West Norfolk Spur of the Commonwealth Rail Line to the median of the Western Freeway (164/I-664). With an estimated cost of \$60 million, this project is 25 percent complete.

Although construction to prepare The Port of Virginia for the future remains ongoing, the work is not being done at the expense of current business. Year-to-date figures for the six months ending December 21, 2007, show that container traffic has increased approximately 12 percent at VIT-operated facilities compared to the previous year. This growth can be attributed to three new ship line services and increased rail activity.

The Port at Work

Part One in a series of photographic essays exploring the employment impact of The Port of Virginia.



CLOCKWISE FROM LEFT: Workers drop a section of pipe into a ditch running along the new shuttle carrier road that will connect NIT North and NIT South. Occasional snow flurries blew in off the river throughout the afternoon. Standing in water, the workers link pipe to the next section. Excess cloth insulation is cut with a razor blade. Mike Seymore (left) and Jack Glisson, Jr. (right), laborers for Lasting-Coastline Inc.

On a blustery January day, a construction crew braves wind, snow and the icy splashes of the Elizabeth River to lay pipe beneath the new shuttle carrier road at Norfolk International Terminals.

This crew has been hired by Lasting-Coastline Inc., a subcontractor for the construction company E.V. Williams Company Inc., which the VPA has hired to build the shuttle carrier road. E.V. Williams Company has also been contracted to

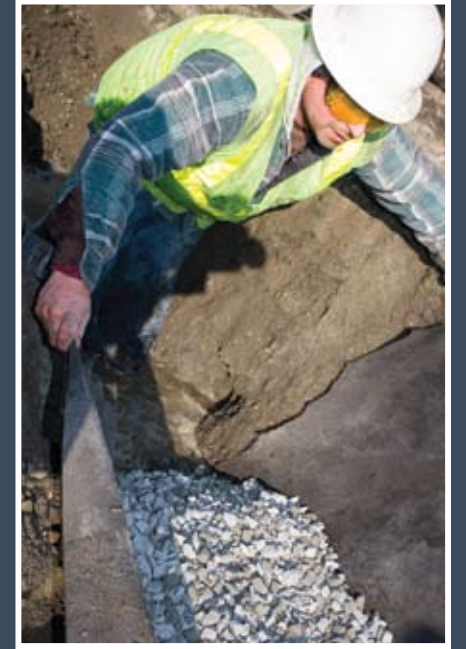
complete the backlands reconstruction at NIT.

The two E.V. Williams projects employ approximately 100 Virginians, not including the numerous subcontractors, vendors and material suppliers that take part in the massive renovations at NIT, which have generated more than \$40 million into the local economy over the past two years.





CLOCKWISE FROM LEFT:
Lasting-Coastline Inc.
Field Supervisor James
Shifflett. To keep the pipe
stable during fluctuations
in tidal groundwater,
the pipe must be covered
with gravel. To finish
the job, a bulldozer
covers the pipe with dirt.



Elizabeth River Project receives over \$1 million in EPA grants

VPA recognized as Model Level River Star for fourth consecutive year, receives award for Sustained Distinguished Performance



Photo courtesy of Van White.



LEFT: After restoration is completed at Money Point, almost a mile of prominent waterfront in Chesapeake, Virginia, will again be celebrated as a hub for marine activities. **RIGHT:** River Star Program Manager Pam Boatwright, VPA Environmental Director Heather Mantz and Elizabeth River Project Executive Director Marjorie Mayfield Jackson.

Going “green” is a business decision for more than 60 businesses in the Elizabeth River watershed, a Chesapeake Bay estuary and home of the world’s largest naval station and one of the world’s busiest harbors, the Port of Hampton Roads.

To further the efforts of these businesses, and to fund additional restoration of the highly degraded Elizabeth River, the U.S. Environmental Protection Agency awarded two grants totaling more than \$1 million, including a coveted Targeted Watershed Grant, to the Elizabeth River Project, an environmental nonprofit begun by four people around a kitchen table in 1991.

Don Welsh, head of the EPA’s Region III in Philadelphia, made the grant presentation at a luncheon honoring the River Stars January 17 at The Founder’s Inn in Chesapeake, Virginia. This year’s banquet recognized more industries than any other year—28 River Stars for achievements that were peer reviewed this past fall.

The Virginia Port Authority was given a Model Level River Star for the fourth consecutive year and also received an award for Sustained Distinguished Performance. The VPA was recognized for voluntarily switching to ultra-low sulfur diesel fuel three years ahead of federal mandates, for its greenhouse gas-reducing chassis pool operation and for mentoring the environmental staff at the new APM marine terminal.

The grants include more than \$150,000 for the River Stars

program over five years to encourage businesses and industries in the watershed to “do right by the river” by voluntarily creating habitats, softening their shoreline, recycling and reducing pollution from their business processes.

EPA’s Community Action for a Renewed Environment (CARE) program provided the second grant. Both grants provide major support for the Elizabeth River Project’s efforts to revitalize the river bottom at Money Point, one of the most contaminated areas of the Chesapeake Bay. CARE helps communities establish collaborative partnerships and set priorities for reducing environmental risks. The watershed grant is for \$902,500 (over five years) and the CARE grant for \$283,625.

The lion’s share of funding, about \$820,000, is for the Elizabeth River Project to enhance the habitat value of the river floor after clean up with an innovative concept to top clean sand with wetlands and oyster reefs. It will be matched by an additional \$5 million for the Money Point clean up, which is being provided by the Living River Restoration Trust, a sister nonprofit to the Elizabeth River Project.

The 63 businesses that have earned their River Star distinction have created or restored 818 acres of wildlife habitat and reduced pollution by more than 180 million pounds since the program was launched in 1997. They’ve also reduced, recycled or reused more than one billion pounds of material at their sites.

In addition to going green environmentally, business participation in the program has added to the “green” in their profits. For instance, BAE Systems Norfolk Ship Repair, a model level River Star since 2000, is the largest private shipyard in the watershed, and part of the United States’ leading non-nuclear ship repair company (including yards in Norfolk, San Diego, San Francisco and Hawaii).

Here’s what River Stars accomplished in 2007 alone:

- Avoided more than \$100,000 in pollution-prevention costs
- Planted 510 wetland plants and 45 trees on their 101-acre site
- Recycled 40 tons of paper
- Saved 485,000 gallons of water through reuse
- Saved 500,000 cubic feet of natural gas through water reuse
- Removed 1,606 tons of contaminated soil and more than 4,000 gallons of oil floating on top of groundwater

“We go beyond compliance in our environmental approach,” said Michael Ewing, environmental manager at BAE Systems Norfolk Ship Repair. “We understand that we must be proactive stewards of the environment. It’s good for our community and good for business.”

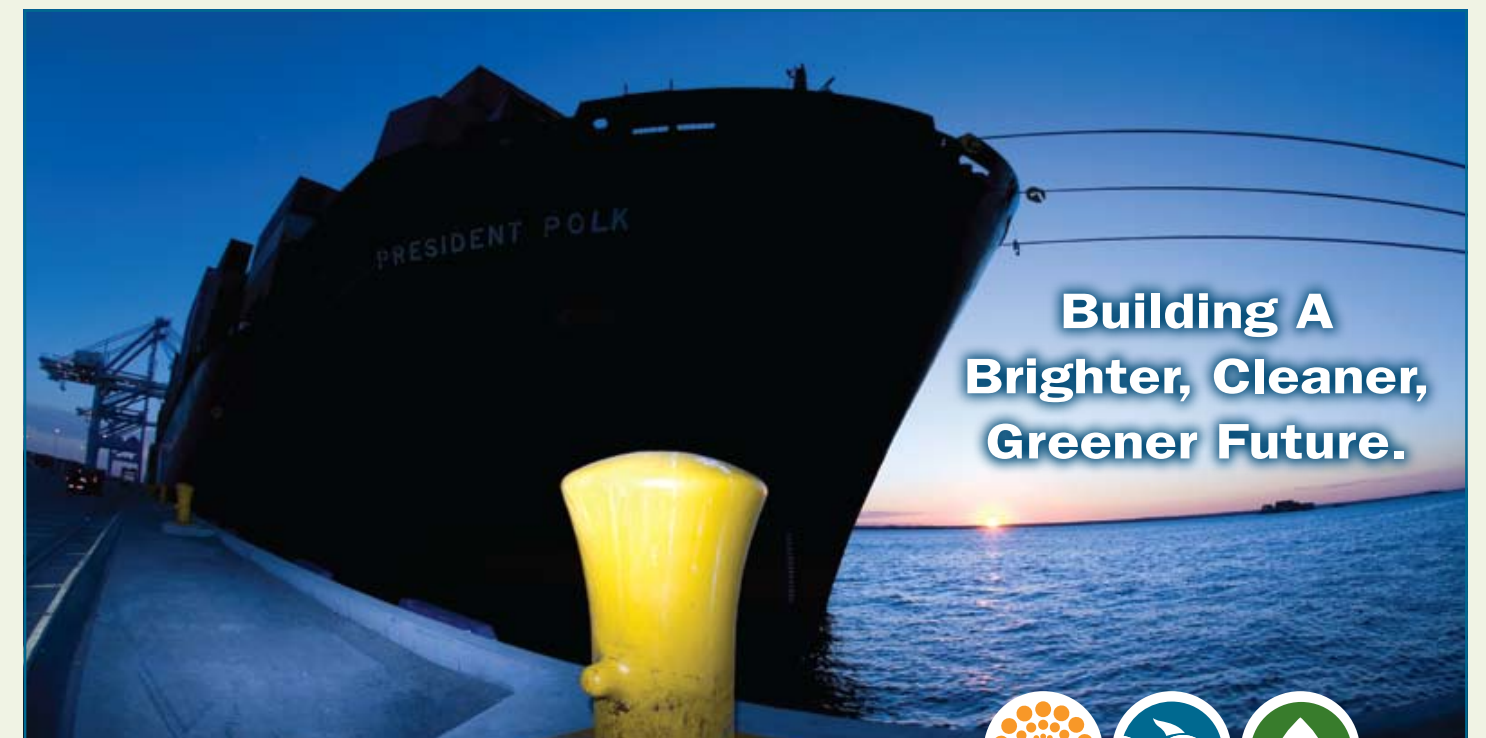
The River Stars roster ranges from ship repair and shipping

companies to churches, from state and private port facilities, including the Virginia Port Authority, to garden clubs and greenways, all of whom have made environmental initiatives a business ethic in the Elizabeth River watershed.

The EPA grant will also fund much-needed initiatives to address contaminated sediments in the river bottom, identified as the number one stressor in the Elizabeth River watershed. The river was once the home of one of the largest concentrations of creosote plants in the country, and has been closed to shell fishing since the early 1900s.

The Elizabeth River was declared by the Chesapeake Bay Program to be one of the most toxic estuaries in the Chesapeake Bay. More than 50 percent of the wetlands along the river have been lost in the 400 years since Captain John Smith sailed into the harbor in 1607. To accommodate modern ships and cities, the Elizabeth River has been filled to two-thirds her normal width and dredged to twice her normal depth.

Another measure of the success of the Elizabeth River Project and its River Stars program is the guidebook, *Balancing Industry and the Environment: How to Achieve Win-Win on the Industrial Waterfront*, nearing completion by ERP and also funded by the EPA. The comprehensive guide will be distributed nationwide and provides step-by-step guidelines for environmental stewardship by industries on urban waterfronts, regardless of size.



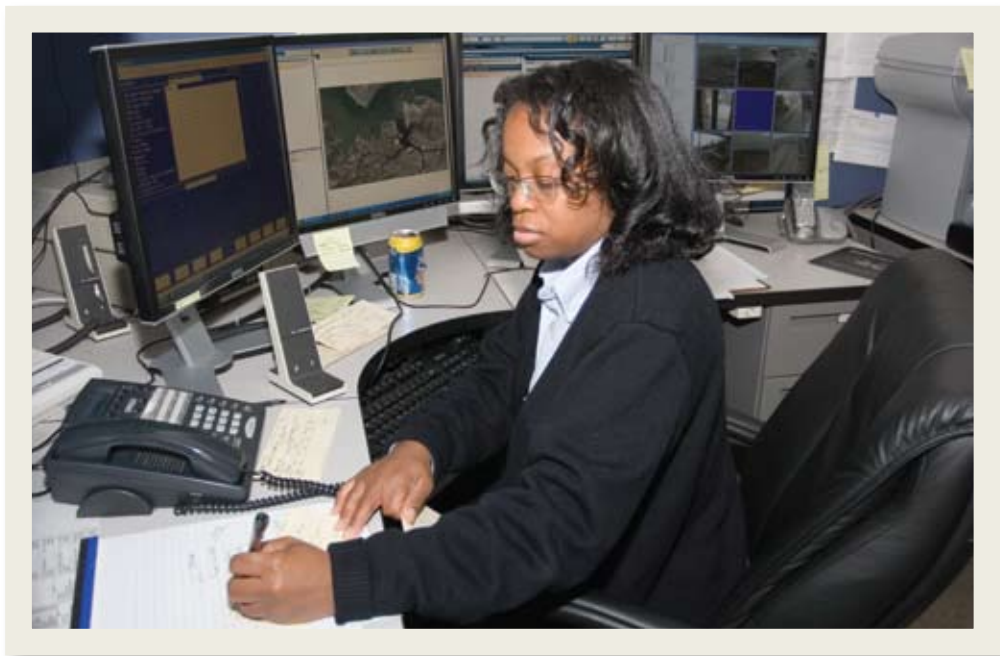
The Virginia Port Authority and Virginia International Terminals, Inc., are committed to building a brighter, cleaner and greener future by conducting Port operations and managing resources in a safe and environmentally sustainable manner.

You are part of The Port of Virginia team. Please share in our commitment to **pollution prevention, safety and compliance and continual improvement.**



THE PORT OF VIRGINIA
Building A Brighter, Cleaner, Greener Future.

Virginia Port Police Emergency 757.440.7070
Port Security Hotline 866.328.3680
USCG National Response Center 877.249.2824
www.vaports.com



Rowena Moore, dispatcher at Port Police headquarters at NIT, works with the new "Situator" software to keep abreast of incidents throughout The Port of Virginia.

Security Upgraded at Terminals

New situational response system enhances VPA police capabilities

With three marine terminals to secure, 10 miles of perimeter fencing to patrol and 250 closed-circuit television cameras to monitor, the Virginia Port Authority Police Department has a big job.

A new software system that integrates several functions with automated situational responses, however, will streamline the around-the-clock job of securing the state-owned deepwater marine terminals while expanding the capability of the VPA police.

"This situational response system, because of its capabilities, helps shrink and streamline some of the things that are normal parts of incident response," said Ed Merkle, the VPA's director of port security and emergency operations. "The system ties together all three terminals providing integrated video and access control with command and control capabilities."

In November, the VPA began operating Situator, a software system created by New York-based Orsus, a firm specializing in situation management and integrated response systems.

For two years Merkle had been looking for software that would give the VPA police improved systems integration and automated response capability. Part of what he was looking for was a system with a track-record of success and one that could operate using the police department's existing hardware.

Situator has several features and one of the most important is its ability to tie together the police department's video

monitoring operation into a single system with a geographic location feature.

"You see a fence on one of the monitors and it looks like a fence, it is very hard to immediately pinpoint the location of what you are looking at," Merkle said. "With Situator, if there is a perimeter breach, we can immediately pinpoint the exact location and train other cameras on the area."

"Also, it is important to remember that the old systems varied somewhat from terminal to terminal, so you had to have system-specific training. This eliminates all of that: everything is unified and that is critical."

Another feature is the system's ability to generate automated responses that keep an officer from having to call to the command center every time the situation changes. In addition, Situator has a function that allows port officials to stay abreast of a situation through instant text messaging.

Other functions of Situator include integrated incident reports, situation simulation for training, tools for system analysis supports emergency response and continuity of operations, real-time information exchange within the domain credentialing and C-TPAT compliance.

The Situator software was purchased using federal grant money awarded in the spring to the VPA in by the Department of Homeland Security.

VPA, Wallenius Wilhelmsen Logistics Sign Contract

Five-year deal secures roll on/roll off cargo



The Virginia Port Authority has signed a five-year contract with Wallenius Wilhelmsen Logistics, a ship line specializing in roll on/roll off cargo that has been calling at The Port of Virginia for more than two decades.

"Signing our customers to long-term contracts is a part of the strategy to secure the future of this port," said Jerry A. Bridges, the VPA's executive director. "These kinds of agreements help build upon the reputation that Virginia is a growing, progressive port with its foundation in customer service and its focus on the future. What is equally important, though, is continuing the relationship with a customer, like Wallenius Wilhelmsen Logistics, that has been calling here for such a long time."

The contract will carry the VPA-Wallenius Wilhelmsen Logistics relationship through 2012 and, at that point, WWL will have the option to sign for five more years. The contract value is estimated at a minimum of \$20 million. The primary cargoes will be machine tools from Japan and natural rubber from Indonesia.

Presently, Wallenius Wilhelmsen vessels in its Far East service call at Norfolk International Terminals three times a month. In summer 2008, those vessels will be shifted to Newport News Marine

Terminal. The move allows Virginia International Terminals Inc., the VPA's private terminal operating company, to begin implementing its plan of turning NNMT into a dedicated breakbulk cargo terminal.

Wallenius Wilhelmsen Logistics also operates a vehicle processing center at NNMT, where it processes vehicles imported from Japan.

"The VPA has, historically, worked with us to accommodate our needs and we think the transition to Newport News will be a very good fit. I'm pleased that we will be able to maintain our presence at The Port of Virginia," said Christopher J. Connor, president of WWL America, which is headquartered in Woodcliff, NJ.

Wallenius Wilhelmsen Logistics is an independent provider of global factory-to-dealer transportation for automotive, agricultural and construction equipment industries. The company also specializes in handling complicated project cargo such as rail cars, power generators, mining equipment and yachts. Wallenius Wilhelmsen Logistics is owned by Wallenius Lines of Sweden and Wilhelmsen of Norway. The company deploys up to 60 vessels that serve 20 trade lanes to five continents.

TRADEWINDS

NEWS ON INDUSTRY FROM ACROSS VIRGINIA



Jerry Bridges, VPA executive director, and El-Sayed Zakaria El-Saaty, director of the transit department, Suez Canal Authority, shake hands after signing a renewal of the two authority’s cooperative Memorandum of Understanding.

The Virginia Port Authority and the Suez Canal Authority have extended their cooperative Memorandum of Understanding for an additional three years. The MOU renews the agencies’ alliance of cooperation and is geared at promoting trade between Asia and the United States through the Suez Canal.

Priorities of the MOU include generating business opportunities, enhancing customer service, driving economic growth, training collaboration and sharing technical assistance. Specifically, the MOU encourages use of the “all water route” that links The Port of Virginia with Asia via the Suez Canal.

In December, representatives of the VPA, including Executive Director Jerry Bridges and Marketing Director Tom Capozzi, traveled to Egypt, where they met with Transit Department Director El-Sayed Zakaria El-Saaty and other members of the Suez Canal Authority.

This meeting and agreement to cooperate follow a previous Memorandum of Understanding, which was signed when members of the Suez Canal Authority traveled to Virginia in June 2006.

MeadWestvaco Corporation has recently concluded a trial with **CSX Transportation, Lydall Distribution Services**, a subsidiary of Lydall Inc. and the **Virginia Port Authority** to replace truck shipments from the company’s Covington, Virginia, paper mill to The Port of Virginia with railroad transportation. The successful trial, which ended in October 2007, enabled MeadWestvaco to examine the cost, efficiency and environmental advantages of rail transportation over trucking before implementing permanent changes.

“As a global packaging supplier, we are constantly evaluating ways to improve our supply chain and transportation processes,” said Chris Osen, vice president of supply management at MeadWestvaco. “If we can decrease the amount of commercial traffic on Virginia’s roads, while getting our product to its destination in a timely and economical manner, everyone wins.”

MeadWestvaco began the trial in 2007 with a goal of transporting 4,000 tons of paper per month from its Covington mill to Lydall Distribution’s facility at Newport News Marine Terminal. The Covington mill produces nearly 22,000 export tons of paper per month, nearly half of which will be transported by rail based

on the success of this trial.

“CSX Transportation provides a safe, efficient and environmentally friendly way to move goods to market,” said Kyle Hancock, vice president of CSXT’s industrial and agricultural marketing group. “Each shipment moving on CSXT from MeadWestvaco to The Port of Virginia will reduce pollution, save fuel and take trucks off the state’s highways. We have a long history of providing

In late November, a congressional delegation visited The Port of Virginia to discuss national transportation issues with VPA leadership. Pictured in the tower at Norfolk International Terminals, from left to right, U.S. Representative John L. Mica, the ranking Republican leader on the U.S. House Transportation and Infrastructure Committee from the seventh congressional district of Florida; VPA Chairman John G. Milliken; U.S. Representative Thelma Drake from Virginia’s second district; VPA Deputy Executive Director J.J. Keever; and VPA Executive Director Jerry A. Bridges.

outstanding transportation service to Virginians and we are proud to continue that tradition.”

“We are excited about the opportunity to expand our export trans-load business at Newport News Marine Terminal,” said Bill Franks, president of Lydall Distribution Services. “This is an opportunity to take advantage of the best the supply chain has to offer and potentially create new jobs within the Port of Hampton Roads. Due to the successful trial, we will be able to offer a new method of getting product to market while helping to relieve congestion on our highways.”

MeadWestvaco estimates that the transfer to rail will remove more than 400 trucks per week from Virginia’s roads and significantly reduce emissions. According to the Association of American Railroads and the U.S. Environmental Protection Agency, trucks emit three times more nitrogen oxides and particulate

matter per ton mile than locomotives.

Recently, MeadWestvaco was honored with the “2006 Shipper of the Year” award from the Virginia Port Authority. The award recognized the volume of product shipped through The Port, the company’s collaboration with The Port to optimize shipment flow by shipping products at off-peak hours and converting truck traffic to a rail/trans-load operation.

Century Express, a new trucking firm, has begun offering transportation services throughout the mid-Atlantic. Headquartered in Suffolk, Virginia, near Virginia’s marine terminals, Century Express offers yard storage, trans-loading and freight storage.

With a strong driver base and strategic alliances in the transportation industry, Century Express promises to move freight “when, where and how you direct.” The firm’s staff, experienced in ocean, rail and truck transport, provides guidance in moving freight from South Carolina to Pennsylvania and all the states in between.

Century Express offers safe and secure transportation; solutions to legal road weight limitations; transport of hazardous materials and refrigerated cargo; and appointments for import, export and drayage shuttles.

CVI and Orient Star Group have teamed up to offer shippers a first of its kind service – an all-water, direct less-than-container-load (LCL) service to The Port of Virginia from China. This service provides a logistics solution for customers who can’t wait to fill a full container load but need to ship on a regular basis from China to the U.S. East Coast.

In addition to consolidation services, CVI also offers a comprehensive range of door-to-door logistics services to get your freight from China to your door.

Cargo can be received at container freight stations in Hong Kong, Shenzhen or Shanghai where it will be carefully loaded. The container will then sail on a direct all-water service to Norfolk, VA. In Norfolk, CVI will arrange deconsolidation and delivery directly to customers.

- LCL Shipments are received from Chinese vendors at CFS in Hong Kong, Shenzhen or Shanghai.
- LCL shipments are consolidated into one full container.
- The container sails from Hong Kong on a direct, all-water service to Norfolk, VA.
- The container is transported from the pier to a local warehouse where it is stripped into separate orders.
- LCL shipments are trucked out to final destinations.

LCL importers of goods from Hong Kong will be able to utilize this service to receive cost savings, reduced transit times and



Welcome to Virginia. This photo was taken during the NYK Daedalus' maiden voyage to The Port of Virginia. Pictured from left to right: Tony Salino, NYK Logistics; Henry Fleisch, Capes Shipping Agencies; Kevin Burwell, VPA; Captain Osamu Manabe; and Peter Mastandrea, NYK Logistics.

reliable sailings. This service can also be used as a dependable and less expensive alternative to airfreight.

Full-container-load importers will benefit from this service due to a general lack of warehouse space maintained by Chinese suppliers. This service will allow FCL shippers to continue moving product to the U.S. without forcing suppliers to store overflow product.

FCL importers will be able to utilize this service when Production time from any one supplier exceeds a weekly timetable to fill a box, overflow cargo exists on an order that cannot be loaded into the FCL container, multiple vendors are used in one or more provinces in China or when importers utilize 20' containers.

Service Highlights

- Direct all-water service from China to Norfolk, VA.
- Reliable weekly sailings with 28 day port-to-port transit.
- Avoid port congestion. The Port of Virginia offers a competitive alternative to port delays in the major West and East Coast ports.
- Reduced shipping costs and transit times due to direct container service.
- Less risk – Direct service means less handling and less handling means reduced risk of damage and cargo loss.
- Complete visibility of cargo flow from port-of-loading to port-of-destination/door through our web-based tracking system.
- Upfront pricing; no hidden destination charges.
- Experienced and well established handling agents at origin and destination.

This service marks the second LCL service offered through The Port of Virginia. The HIPAGE Company Inc. and PL Shipping of India offer a weekly LCL service from Nhava Sheva, India.

ContainerPort Group, headquartered in Cleveland, Ohio, has acquired Norfolk Warehouse Distribution Centers and Taylor Logistics of Norfolk, Virginia. Operations officially integrated effective December 1, 2007. NWDC and Taylor Logistics will continue to operate under their existing names but as new divisions of ContainerPort Group.

ContainerPort Group is a leading provider of services to the container shipping industry and is in its 37th year of operation. CPG provides both motor carrier services and terminal services (depot, CY, equipment maintenance, rail ramp operations) to shipping lines, railroads, shippers/receivers and freight intermediaries, with concentration on international cargoes. CPG operates facilities and terminals in thirteen distinct geographic markets throughout the Midwest, Ohio Valley and East Coast.

NWDC and Taylor Logistics are leading providers of public warehousing, cargo distribution, special handling and customized logistics serving the Port of Norfolk and mid-Atlantic region for over fifty years. Operations are centered on a 15-acre distribution services campus with 167,000 square feet of warehousing and cargo handling facilities.

CPG and NWDC/Taylor Logistics are joining together to create a combined, stronger and more market-capable company. Both NWDC/Taylor Logistics and CPG have earned excellent reputations for service reliability, knowledgeable people and business integrity over the years. By combining strengths and talents, the companies will become more competitive and attractive, ensuring greater capacity and a broader service menu to meet the growing requirements for reliable motor carrier services, public warehousing, cargo distribution and customized logistics.

PORT PROFILES



LEFT: Captain Bill Burket, "Fireman of the Year." RIGHT: Following a 10-year career, Sunny K.P. How, who was the VPA marketing representative in Singapore, has retired from the Virginia Port Authority.



Captain Bill Burket, director of the VPA's Marine Incident Response Team (MIRT), has been named the City of Virginia Beach's "Fireman of the Year 2007."

In addition to his duties as a Virginia Beach fireman, Burket plays a critical safety role in The Port of Virginia. As leader of MIRT, he is responsible for responding to fire incidents throughout the Hampton Roads harbor. MIRT also hosts the annual Hampton Roads Marine Firefighting Symposium.

The Port of Hampton Roads is fortunate to have MIRT. While all local fire departments adjacent to ports are responsible for fighting fires in their jurisdiction, it is unusual to have an organization such as MIRT dedicated to responding to marine fires. Where similar organizations do exist at other ports, they are largely dedicated to planning and training. MIRT actually responds to marine incidents.

"Our capabilities are to provide on-scene assistance and advice to either the ship's master or the local incident commander," Burket said. "We also provide special marine firefighting equipment, such as three 3,000 gallons-per-minute portable fire pumps and three specialized support trucks that carry equipment and tow the pumps."

This equipment is put to use when a fire occurs on either a berthed ship or a vessel at sea. Some years see more incidents than others – in 2006, for example, MIRT responded to four situations, providing equipment and expertise to help fight fires and assist in a search and rescue operation.

Trade with India accounts for a consistently growing share of The Port of Virginia's business and because of that the Virginia Port Authority recently contracted with an experienced firm to represent the VPA in that country. **Mr. Ramkumar** and **Mr. Jayaram** of PL Shipping & Logistics Ltd. will be the new VPA marketing representatives in India.

In late 2007, the VPA and PL Shipping & Logistics Ltd. signed an agreement for that company to represent the VPA in India's primary manufacturing centers, inland transport hubs and major container ports. The company will promote the shipment of Indian cargo via The Port of Virginia, highlighting The Port's geographic advantages, operational efficiencies and its intermodal reach.

"The growth we've seen in our trade with India is not an anomaly and we think that we can continue to cultivate that market by having someone there selling the advantages of The Port of Virginia," said Jerry A. Bridges, the VPA's executive director.

In 2006, the VPA's terminals handled 62,860 TEUs coming from or headed to India; in 1994, the VPA's trade with India amounted to 8,490 TEUs. The average annual growth in trade between Virginia and India since 1994 has been 17 percent. And, in 2006, India ranked No. 6 in total container volume.

"PL Shipping's experience and network give us a base for creating awareness about this port among India's shippers and service providers," Bridges said. "From there we can offer trade support and logistics collaboration."

A LOOK BACK

THE YELLOW FEVER EPIDEMIC OF 1855

ON JULY 8, 1855, a young man working on the *USS Benjamin Franklin* died of yellow fever. Onboard the ship, which was docked at Page and Allen’s shipyard in Gosport, Portsmouth, three sailors had already died from the plague. Panic swept Tidewater. That Sunday afternoon, the Portsmouth Town Council convened in special session. The ship was evicted from the harbor. But the fever’s inexorable spread had begun.

For more than three months, until frost defeated the infecting mosquitoes, yellow fever decimated Portsmouth and Norfolk. “The Twin Cities by the Sea” suffered higher rates of loss than the black death had spread across Europe during the Middle Ages. Of Norfolk’s 16,000 residents, 6,000 fled the city. Nearly all that remained were infected, and as many as 2,000 died. In Portsmouth, where an estimated 10,000 people lived, 4,000 did not leave, and about 1,080 died.

The disease incubated in a Portsmouth tenement called Irish Row, where entire families lived in single rooms near the shipyard. Some dwellings were shared with pigs and calves. Despite prudent acts by the sanitation committee and desperate acts by the public – like burning a rundown section

of Norfolk where the disease was rampant – the “invisible hand of death” could not be checked. The weather that summer was less stifling than most years. Along the neat streets of Norfolk, a growing port city that was known for its cleanliness and good health, everything appeared normal.

Except the town was deserted. Those who had not escaped tended to the sick or were afraid to go outdoors. Except for medicine shops and funeral homes, businesses were closed. Commerce ceased along the bustling waterfront. On the rare occasion a ship called, its decks were stacked high with coffins.

“Were you in Norfolk, you would ask with wonder, where can the terrible monster be? You might walk through every street and lane, and find them clean. You would look up to the blue sky above you, and see it radiant and pure. You would feel the delicious breeze, and see all along your pathway the most luxuriant bloom of flowers; and you would scarce believe that every house was the abode of sorrow and desolation. Yet, so it is,” wrote the Reverend William M. Jackson on September 7. Before the end of the month, he would be sick and later die.

That September, at the peak of the pestilence, 60 to 80 people were dying each day. Overwhelmed cemeteries buried bodies in pits. Neighboring cities, which had banned those who fled Hampton Roads, now sent generous aid donations. Nurses and doctors from as faraway as New York came to help – and some did not go home again.

The streets remained empty, but the sounds of the sick filled the city.

“In some instances, whole families were taken, and old and venerated mansions were left, for months, as vacant and silent as a mausoleum,”

“Were you in Norfolk, you would ask with wonder, where can the terrible monster be? You might walk through every street and lane, and find them clean. You would look up to the blue sky above you, and see it radiant and pure. You would feel the delicious breeze, and see all along your pathway the most luxuriant bloom of flowers; and you would scarce believe that every house was the abode of sorrow and desolation. Yet, so it is.”

– Reverend William M. Jackson

wrote William S. Forrest, an eyewitness. “Weeds grew in the deserted streets; the piercing cries of distress and the groans of the dying were heard, while the stern and solemn death-angel executed his dread commission to crush down the people.”

Forrest also described the symptoms of yellow fever: “The chill, the acute pain in the head and limbs, the strange, sleepy, and drowsy feeling, the continuous burning fever, and sometimes the rapid beat of the heart—these symptoms, or some of them, came on, and, unless soon arrested and checked, were, in a great number of cases, quickly followed by delirium, the urinary suppression, and the fatal black vomit; and then came the last conflict of nature, the death-struggle itself, and the final closing up of the life-scene.”

The fall’s first frost came early, on the night of October 14. The survivors of the yellow fever did not understand why the cold weather ended their suffering. Walter Reed, the man who would discover that mosquitoes transmit the disease, was four years old. He lived in Gloucester, Virginia, close enough that his family might have feared the sickness, but far enough away to remain safe.

Historical documents on the yellow fever epidemic of 1855 have been compiled by Donna Bluemink at www.rootsweb.com/~usgenweb/val/yellow-fever/yftoc.html.



Navy Yard, Gosport.

“Weeds grew in the deserted streets; the piercing cries of distress and the groans of the dying were heard, while the stern and solemn death-angel executed his dread commission to crush down the people.”

– William S. Forrest



VIEW OF THE HARBOR OF NORFOLK AND PORTSMOUTH FROM NEAR FORT NORFOLK.

PORT SERVICES DIRECTORY



400 YEARS OF OPPORTUNITY



“We have one of the finest labor forces in the maritime industry here in Hampton Roads, and the Port continues to grow because our customers can count on us for excellent service day in and day out. Employers and employees throughout the maritime community have helped The Port of Virginia become a world-class port.”
—Jerry A. Bridges, Executive Director
Virginia Port Authority

Thanks to Our Port

Since Virginia and its harbor greeted the first settlers, we’ve served as the launch site for commerce and trade in America. For over 400 years, our waters have carried loads of opportunity. The Port brings excellent jobs, a healthy, striving economy and supports a vibrant and exciting community. As we celebrate 400 years of healthy commerce, we remember and appreciate the thousands of people and businesses that make up one of the largest port complexes in the United States, The Port of Virginia. The Port’s economic impact to the state represents 165,000 port and port-related jobs, \$3.5 billion in personal wages and salaries and \$667 million in state and local tax revenue generated by activity at Virginia Port Authority terminals.



One Stop. America and the World.

© 2007 Virginia Port Authority

To learn more about The Port of Virginia, visit our website at www.vaports.com.

Virginia Port Authority • 600 World Trade Center • Norfolk, VA 23510 USA • 757-683-8000 • 800-446-8098



MARKETING STAFF

Tom Capozzi
Sr. Managing Director of Marketing Services
tcaپozzi@portofvirginia.com

Russell J. Held
Managing Director of Marketing
rheld@portofvirginia.com

Greg J. Edwards
Managing Director of Marketing
gedwards@portofvirginia.com

Cary Hagen
Director of Marketing
chagen@portofvirginia.com

Russell Young
Director, Economic Development
ryoung@portofvirginia.com

Kevin Burwell
Director, Business Analysis and Strategy
kburwell@portofvirginia.com

JoAnne Anstett
Customer Service Manager
janstett@portofvirginia.com

Mike Jones
National Accounts
mjones@portofvirginia.com

Norfolk Office Staff
600 World Trade Center
Norfolk, Virginia 23510-1696
Phone (757) 683-8000
Toll-free 1 (800) 446-8098
Fax (757) 683-8500

Martie H. Schlosser
Intermodal Coordinator
mschlosser@portofvirginia.com

SOUTHEAST REGION
Debbie Dowdle
P.O. Box 0188
Denton, North Carolina 27239-0188
Phone (336) 859-3058
Fax (336) 859-3068
ddowdle@portofvirginia.com

NORTHEAST REGION
Thomas MacGregor
5 Marine View Plaza, Suite 222
Hoboken, New Jersey 07030
Phone (201) 876-1654
Fax (201) 876-0382
tmacgregor@portofvirginia.com

MID-WEST REGION
Jeanne G. Heilman
P.O. Box 704
Novi, Michigan 48376-0704
Phone (248) 305-6500
Fax (248) 305-6501
jheilman@portofvirginia.com

Carol J. Schreiber
Virginia Port Authority
4306 Bedford Road
Valparaiso, Indiana 46383
Phone (219) 531-8881
Fax (219) 531-8899
cschreiber@portofvirginia.com

MID-ATLANTIC
Daniel LeGrande, regional manager
600 World Trade Center
Norfolk, Virginia 23510
Phone (757) 683-8000
Fax (757) 683-8500
dlegrande@portofvirginia.com

James Davis, regional manager
P.O. Box 345
Front Royal, Virginia 22630
Phone (540) 636-4200
Fax (540) 636-4244
jdavis@portofvirginia.com

SOUTHWEST/WEST REGION
Nick King, area manager
P.O. Box 341887
Memphis, Tennessee 38184-1887
Phone (901) 377-3983
Fax (901) 377-5324
nking@portofvirginia.com

OHIO VALLEY REGION
Don Cartmell
2310 Wells Drive
Bethel Park, Pennsylvania 15102
Phone (412) 851-0680
Fax (412) 851-0681
dcartmell@portofvirginia.com

SOUTH/CENTRAL AMERICA
Antonio Carlos Amado
Av. Nova Cantareira 2.233- 5th floor Suite/
Cj 54-Ed.Empresarial Cantareira
CEP 02331-003
Sao Paulo, SP- Brazil
Phone (55-11)-6996-1805
Fax (55-11)-6996-7105
aamado@portofvirginia.com

EUROPE/CIS/SOUTH
AFRICA/ISRAEL/MIDDLE EAST
Betty Princen-Dignef
479 Avenue Louise
B-1050 Brussels, Belgium
Phone (322) 648-8072
Fax (322) 646-3554
bprincen@portofvirginia.com

JAPAN/AUSTRALIA
Yoshio Hirai
Suite B3, 8F, Imperial Tower Hotel
1-1-1 Uchisaiwai-cho
Chiyoda-Ku
Tokyo 100-0011, Japan
Phone (81) 03-5219-1228
Fax (81) 03-5219-1201
yoshio.hirai@portofvirginia.com

HONG KONG/CHINA/TAIWAN
H. L. Ringo Chi
Suite 3208, Shell Tower
Times Square, Causeway Bay
Hong Kong
Phone (852) 2506-6239
Fax (852) 2506-6277
rchi@portofvirginia.com

INDIA
PL Shipping & Logistics Ltd
Mr. Ramkumar. R - MD
Mr. Jayaram. R - COO
56/57 3rd Floor
Rajaji Salai
Chennai, India 600 001
Phone (91) 44-25271201
Fax (91) 44-25271147
md.ramkumar@co.plsll.co.in
coo.jayaram@co.plsll.co.in

KOREA
Sang Yong Lee
#1807 Trade Tower Samsung 1-dong
Kangnam-ku
Seoul, Korea 135-729
Phone (822) 739-6248
Fax (822) 739-6538
slee@portofvirginia.com

STEAMSHIP SERVICES INFORMATION

The following steamship line services, schedule and information is current as of press date and as information is made available to the editor. The Virginia Maritimer cannot be held responsible for inaccuracies, errors or omissions. Some services listed may be slot charter, space sharing agreements, transshipments and various other arrangements in addition to direct vessel calls. To report changes or include new information in the directory, contact the Virginia Maritimer editor at (800) 446-8098 or fax to (757) 683-2897.

Steamship Lines and Cargo Handled

	Frequency	Container	Reefer	Breakbulk	Ro-Ro	Heavy Lift
North Europe						
America President Lines	Weekly	●	●			
ANL Container Line	Weekly	●	●			
Atlantssskip	28 days	●	●			
Atlantic Container Line	Weekly	●	●	●	●	
Atlantic Ro-Ro Carriers	Monthly	●	●	●	●	●
Bertling Line	Inducement			●		
China Shipping Container Lines	Weekly	●	●			
CMA CGM	Weekly	●	●			
COSCO	Weekly	●	●		●	
CSAV Norasia	Every 7 days	●	●			
Evergreen Lines	Weekly	●	●			
Gold Star Line	Every 7 days	●	●			
Hanjin Shipping	Weekly	●	●			
Hapag-Lloyd	Weekly	●	●			
Hatsu Marine	Weekly	●	●			
Hyundai Merchant Marine	Weekly	●	●			
Italia Marittima SpA	Weekly	●	●			
“K” Line	Weekly	●	●			
Maersk Line	Weekly	●	●			
Marfret	Fortnight	●	●			
Mediterranean Shipping Co.	Weekly	●	●			
Mitsui OSK Lines	Weekly	●	●			
NYK Line	Weekly	●	●	●		
Orient Overseas Container Line	Weekly	●	●			
Rickmers Line	Inducement	●	●	●		●
Samskip	Every 28 days	●	●			
Wallenius Wilhelmsen	Every 10 days and weekly	●	●		●	
Yang Ming Line	Weekly	●	●			
Zim Integrated Shipping Services	Weekly	●	●			

Mediterranean

American President Lines	Every 7 days	●	●
ANL Container Line	Every 7 days	●	●
China Shipping Container Line	Every 8 days	●	●
CMA-CGM	Weekly	●	●
COSCO	Weekly	●	●
CSAV Norasia	Weekly	●	●
Emirates Shipping Line	Every 7 days	●	
Hanjin Shipping	Weekly	●	●
Hapag-Lloyd	Weekly	●	●

	Frequency	Container	Reefer	Breakbulk	Ro-Ro	Heavy Lift
Mediterranean <small>Cont'd</small>						
Italia Marittima SpA	Weekly	●	●			
“K” Line	Weekly	●	●			
MacAndrews	Every 7 days	●	●			
Maersk Line	Weekly	●	●			
Mediterranean Shipping Co.	Weekly	●	●			
National Shipping Co. of Saudi Arabia	Every 21 days	●	●	●	●	
NYK Line	Weekly	●	●			
Orient Overseas Container Line	Weekly	●	●			
Safmarine	Weekly	●	●			
Shipping Corp. of India	Every 7 days		●			
Turkon	Every 7 days	●	●			
United Arab Shipping Co.	Weekly	●	●			
Yang Ming	Weekly	●	●			
Zim Integrated Shipping Services	Weekly	●	●			

Africa

L&C Marine	Monthly			●		
Maersk Line	Weekly	●	●			
Mediterranean Shipping Co.	Weekly	●	●			
Safmarine	Weekly	●	●			

Indian Subcontinent

American President Lines	Every 7 days	●	●			
ANL Container Line	Every 7 days	●	●			
CMA-CGM	Every 7 days	●	●			
CSAV Norasia	Every 7 days	●	●			
Emirates Shipping Line	Every 7 days	●				
Gold Star Line	Every 7 days	●	●			
Hanjin Shipping	Weekly	●	●			
Hapag-Lloyd	Weekly	●	●			
Indotrans	Every 21 days	●	●		●	
“K” Line	Weekly	●	●			
MacAndrews	Every 7 days	●	●			
Maersk Line	Weekly	●	●			
Nat'l Shipping Co. of Saudi Arabia	Every 21 Days	●	●	●	●	
NYK Line	Weekly	●	●			
Orient Overseas Container Line	Weekly	●	●			
Safmarine	Weekly	●	●			
Shipping Corp. of India	Every 7 days	●	●			
United Arab Shipping	Weekly	●	●			
Yang Ming Line	Weekly	●	●			
Zim Integrated Shipping Services	Every 7 days	●	●			

	Frequency	Container	Reefer	Breakbulk	Ro-Ro	Heavy Lift
Asia						
American President Lines	Weekly	●	●			
ANL Container Line	Weekly					
China Shipping Container Line	Weekly and every 8 days	●	●			
CMA-CGM	Weekly	●	●			
COSCO	Weekly	●	●			
CSAV Norasia	Every 7 days	●	●			
Eastern Car Liner	Inducement			●	●	●
Evergreen	Weekly	●	●			
Gold Star Line	Every 7 days	●	●			
Hanjin Shipping	Weekly	●	●			
Hapag-Lloyd	Weekly	●	●			
Hatsu Marine	Weekly	●	●			
Hyundai Merchant Marine	Weekly	●	●			
Hyundai Merchant Marine	Monthly			●		
Intermarine	Inducement			●		●
Italia Marittima SpA	Weekly	●	●			
“K” Line	Weekly	●	●			
Maersk Line	Weekly	●	●		●	
Mitsui OSK Lines	Weekly	●				
NYK Line	Weekly	●	●			●
Orient Overseas Container Line	Weekly	●	●			
Pan Ocean Shipping	Monthly			●		
Rickmers Line (outbound only)	Inducement	●	●	●		●
Safmarine	Weekly	●	●			
SK Shipping Co.	Twice monthly					●
United Arab Shipping Co.	Weekly	●	●			
Wallenius Wilhelmsen Logistics	Every 10 Days	●	●	●	●	
Yang Ming Line	Weekly	●	●			
Zim Integrated Shipping Services	Every 7 days	●	●			

Australia / New Zealand

ANL Container Line	Fortnight	●	●			
CMA-CGM	Fortnight	●	●			
Hapag-Lloyd	Weekly	●	●			
Maersk	Weekly	●	●			
Marfret	Fortnight	●	●			
Wallenius Wilhelmsen	Every 10 days	●	●	●	●	

	Frequency	Container	Reefer	Breakbulk	Ro-Ro	Heavy Lift
--	-----------	-----------	--------	-----------	-------	------------

South America

Alianca	Every 7 & 8 days	●	●			
American President Lines	Every 7 days	●	●			
Clipper Line	Every 2 months	●		●		●
CSAV	Every 8 days	●	●			
Evergreen Lines	Weekly	●	●			
Hamburg Sud	Every 7 & 8 days	●	●			
Hanjin Shipping	Weekly	●	●			
Hapag-Lloyd	Every 7 & 8 days	●	●			
Intermarine	Inducement			●		●
“K” Line	Weekly	●	●			
Kent Line	Inducement			●		
Mediterranean Shipping Co.	Every 7 days	●	●			
NYK Line	Weekly	●	●			
Yang Ming	Weekly	●	●			

Caribbean/Central America

Alianca	Every 8 days	●	●			
American President Lines	Weekly	●	●			
ANL Container Line	Weekly	●	●			
China Shipping Container Line	Weekly	●	●			
CMA-CGM	Weekly	●	●			
CSAV	Every 8 days	●	●			
Evergreen	Weekly	●	●			
Hamburg Sud	Every 8 days	●	●			
Hapag-Lloyd	Weekly	●	●			
Hatsu Marine	Weekly	●	●			
Hyundai Merchant Marine	Weekly		●			
Intermarine	Inducement			●		●
Italia Marittima SpA	Weekly	●	●			
Maersk Line	Weekly	●	●			
Marfret	Fortnight	●	●			
Mediterranean Shipping Co.	Weekly	●	●			
Mitsui OSK Line	Weekly	●	●			
NYK Line	Weekly	●	●			
Orient Overseas Container Line	Weekly	●	●			
Safmarine	Weekly	●	●		●	
Wallenius Wilhelmsen	Every 10 days	●	●	●	●	

North America

AB Transatlantic	Monthly			●	●	
------------------	---------	--	--	---	---	--

	Freight Forwarders & Customs Brokers				
	International Freight Forwarder	Custom House Broker	Foreign Trade Consultant	International Air Traffic Association	
AEI Radix Customs Brokerage Services • (757) 464-2047 5425 Robin Hood Road, Suite 220, Norfolk, 23513		●	●	●	
Anchor Customs Brokerage • (804) 557-3058 7449 Shoreline Drive, Quinton, 23141 • www.anchorcb.com	●	●			
Ambrosio Shipping Co. • (757) 485-0566 • 1 Columbus Center, #500, Virginia Beach, 23462 • www.ambrosioshipping.com	●	●	●	●	
Arya Express Shipping Co. • (703) 485-0800 P.O. Box 1929, Falls Church, 22041	●			●	
Barthco International Inc. • (757) 314-4300 223 E. City Hall Ave., Norfolk, 23510 • www.barthco.com	●	●	●	●	
BDP International • (757) 426-8194 1721 Everest Circle, Virginia Beach, 23454		●			
Blue Wing Express • (757) 413-9880 911 Live Oak Drive, Suite 106, Chesapeake, 23320	●	●		●	
Cargo Transport, Inc. • (703) 661-6223 • 44190 Mercure Circle No. 195, Dulles, 20166 • www.cargotransportinc.com	●	●	●	●	
CV International Inc. • (757) 466-1170 • 1128 West Olney Road, Norfolk, 23507 • www.cvinternational.com	●	●	●	●	
C.H. Powell Co. • (757) 626-1346 • 208 E. Plume St., Monticello Arcade, #310, Norfolk, 23510 • www.chpowell.com	●	●			
C.H. Robinson Worldwide, Inc. • (804) 340-4500 2235 Staples Mill Road, Richmond, 23230	●	●	●	●	
DHL Danzas Air & Ocean • (757) 464-2047 • 5425 Robin Hood Road, Norfolk, 23513 • www.us.danzas.com	●	●		●	
E&B International, Inc. • (757) 853-5101 5353 E. Princess Anne Road, Norfolk, 23502	●	●			
Eagle Inc. • (757) 558-2039 713 Fenway Ave., Chesapeake, 23323	●	●		●	
Eastern Export Co. • (757) 455-8311 966 Norfolk Square, Norfolk, 23502	●				
Eastport Customs Brokers Inc. • (757) 873-2215 732 Thimble Shoals Blvd., #302A, Newport News, 23606	●	●			
Excel Global Logistics • (757) 446-0136 • Interstate Corp. Center, Bldg. 11, 420 N. Center Dr., #142, Norfolk, 23502	●	●		●	
Expeditors International • (757) 853-7776 2550 Ellsmere Ave., Norfolk, 23513 • www.expd.com	●	●		●	
FedEx Trade Networks • (757) 857-8000 5445 Henneman Drive, Norfolk, 23513 • www.fedex.com	●	●			
Fracht USA • (757) 457-8388 • 201 E. City Hall Ave., #500, Norfolk, 23510 • www.frachtusa.com	●	●	●	●	
Fred P. Gaskell Co. Inc. • (757) 622-4371 821 W. 21st Street, Norfolk, 23517	●	●	●		
Global Passages, Inc. • (757) 450-7128 2425-201 Ocean Shore Cres., Virginia Beach, 23451			●		
HCI Corp. • (703) 463-1095 P.O. Box 936, Lexington, 24450 • www.hciexport.com			●		
The Hipage Co. Inc., • (757) 446-1500 227 East Plume Street, Norfolk, 23510 • www.hipageco.com	●	●	●	●	
John A. Steer Company • (757) 455-5884 400 N. Center Drive, Suite 111, Bldg. 3, Norfolk, 23502	●	●	●		
John S. Connor, Inc. • (757) 627-3910 • 208 E. Plume St., Monticello Arcade, Norfolk, 23507 • www.jsconnor.com	●	●	●	●	
Kamino International Transport Inc. • (703) 435-9793 23651 Overland Drive, Sterling, 20166 • www.kamino.com	●	●	●	●	
Kuehne & Nagel, Inc. • (757) 533-9668 819 W. 21st St., Norfolk, 23517 • www.kuehne-nagel.com	●	●	●	●	
Leschaco, Inc. • (804) 222-1406 (U.S. Customs and Border Protection) 5711 S. Laburnum Ave., Richmond, 23231	●	●	●		
Marine Forwarding Co. Inc. • (757) 857-4141 205 34th St., Suite 1603, Virginia Beach, 23451	●				
Maritime Cargo Service (757) 382-0124 332 Clearfield Ave., Chesapeake, 23320		●			
Meridian IQ • (703) 450-6800 22 Export Drive, Sterling, 20164	●	●		●	

Freight Forwarders & Customs Brokers
Continued

International Freight Forwarder	Custom House Broker	Foreign Trade Consultant	International Air Traffic Association
Nelson International Inc. • (757) 461-8111 6310 E.Virginia Beach Blvd., Norfolk, 23502	●	●	
Nippon Express U.S.A. Inc. • (757) 887-0400 • 275 Picketts Lane, Newport News, 23603 • www.nipponexpressusa.com	●	●	
Panalpina Inc. • (757) 461-8025 • 6325 North Center Drive, #105, Norfolk, 23502 • www.panalpina.com	●	●	●
Pinnacle International Freight Inc. • (757) 306-1211 2700 Avenger Drive,Virginia Beach, 23452	●	●	●
Pinnacle International Freight Inc. • (757) 306-1211 2700 Avenger Drive,Virginia Beach, 23452	●	●	●
Progresso Consulting • (757) 575-3217 1502 Antler Circle,Virginia Beach, 23464		●	
Samuel Shapiro & Co. Inc. • (757) 626-0512 500 E. Main St., #1230, Norfolk, 23510 • www.shapiro.com	●	●	●
Schenker International Inc. • (757) 456-2390 192 Ballard Court, Suite 200,Virginia Beach, 23462	●	●	●
Seamodal Transport Corp. • (757) 461-6288 870 N. Military Hwy., #322, Centura Bldg., Norfolk, 23502	●	●	●
Stellar Trade Support, Inc. • (757) 489-0475 4807 Colley Avenue, Suite 8, Norfolk, 23508		●	
TMX Shipping, Inc. • (757) 563-6200 2020 General Booth Blvd., #220,Virginia Beach, 23454	●	●	●
TNT Freight Management (USA), Inc. • (757) 420-5855 630-D Woodlake Drive, Chesapeake, 23320 • www.tntfreight.com	●	●	●
UPS Supply Chain • (757) 363-6030 1457 Miller Store Road, Suite 101, Virginia Beach, 23455	●	●	●
UTI, United States, Inc. • (757) 424-6560 2001 Old Greenbrier Rd., Chesapeake, 23320	●	●	●
Vandergrift Forwarding Co., Inc. • (757) 457-5500 201 E. City Hall Ave., Suite 600, Norfolk, 23510	●	●	●
Victory Van Corporation • (703) 751-5200 950 South Pickett Street,Alexandria, 22304 • www.victoryvan.com	●	●	●
W.M. Stone & Co. • (757) 622-3293 P.O. Box 3160, Norfolk, 23514 • www.wmstone.com	●	●	
Western Overseas • (757) 340-2288 • 4456 Corporation Ln., Suite 200, Virginia Beach, 23462 • norfolk@westernoverseas.com	●	●	
Yusen Air & Sea Service (USA) Inc. • (757) 424-0790 550-C Woodlake Circle, Chesapeake, 23320	●	●	●

Warehousing								
	Dry Storage	Bonded Storage	Distribution Services	Export Packing	Cold Storage	Segregation Services	Rail Service	Square Feet
A&E Moving & Storage (757) 625-7631, Norfolk • www.nasbell.com	●		●	●		●		50,000
A&M Warehouse Services (757) 393-7467, Portsmouth	●		●	●		●		45,000
A&S Warehouse Co. • (304) 263-3871 Martinsburg • www.aswarehouse.com	●		●	●		●	●	100,000
Ambrosio Shipping Co. Inc. • (757) 485-0566, Chesapeake • www.ambrosioshipping.com	●	●	●	●		●	●	14,000
American Port Services • (757) 855-1934, Norfolk www.amporbserv.com	●	●	●	●		●	●	1,000,000
Americold Logistics Inc. • (757) 857-1268, Norfolk • www.americold.com		●	●		●	●	●	1,918,106
Arreff Terminals • (757) 393-6534, Portsmouth www.fornazor.com/ARREFF_TERMINAL.shtml@aol.com	●		●	●		●	●	6,000
Beamon & Lassiter • (757) 363-7675, Virginia Beach • www.beamonandlassiter.com	●	●	●	●	●	●	●	25,000
Brooks Transfer & Storage Co. • (757) 427-9500, Virginia Beach • www.brookstransfer.com	●		●	●		●		57,000
Burris Company of Charleston (757) 487-7977, Chesapeake	●	●	●	●		●	●	44,000
Burris Refrigerated Services (757) 487-7847, Chesapeake • www.burrislogistics.com			●	●	●	●	●	115,000

Warehousing

	Dry Storage	Bonded Storage	Distribution Services	Export Packing	Cold Storage	Segregation Services	Rail Service	Square Feet
Cargo Transport, Inc. • (703) 661-6223, Dulles • www.cargotransportinc.com	●	●	●	●		●		43,000
Carroll Trucking Inc. • (757) 853-1170, Norfolk • www.carroll-trucking.com	●	●	●	●		●	●	6,500
Cavalier Moving & Storage Corp. • (757) 625-6721, Norfolk • www.cavalierlogistics.com	●			●				55,000
Chick Packaging of Virginia Inc. • (757) 595-0541, Newport News • www.chickpackaging.com	●			●			●	500,000
Coleman American Moving Services • (757) 857-0101, Norfolk • www.cams@colemanamerican.com	●			●				35,000
Commonweathl Storage Co. (757) 539-2301, Suffolk • www.com_stg.com	●		●			●	●	700,000
Continental Terminals Inc. (757) 487-5354, Chesapeake	●	● (cocoa only)	●	●	●	●	●	222,000
Cornerstone Systems (757) 397-2005, Chesapeake • www.cornerstone-systems.com	●		●					100,000
Crossways Commerce Center (757) 627-0660 ext. 235, Chesapeake	●							330,000
Crossways Commerce Center II (757) 627-0661, Chesapeake	●			●				145,300
CV International Inc. • (757) 466-1170 Norfolk, 23507 • www.cvinternational.com				●				
Dixie Box and Crating Corp. • (757) 625-7520, Norfolk • www.dixiecrating.com	●		●	●		●		30,000
Drucker & Falk Commercial Sales & Leasing (757) 873-1401, Newport News • www.druckerandfalk.com	●			●			●	900,000
Eagle Circle International Inc. • (757) 363-1122, Virginia Beach • www.eaglegl.com	●		●	●		●		11,800
Eimskip Logistics • (757-217-4512, Virginia Beach • www.eimskiplogistics.com	●		●	●		●		40,000
Elizabeth River Terminals Inc. • (757) 543-0335, Chesapeake • www.kindermorgan.com	●		●	●		●	●	532,000
Empire Storage & Van Corp. • (757) 461-8888, Norfolk • www.danmar.com	●		●	●		●		40,000
Fritz Cos. Inc. (757) 494-3650, Chesapeake	●	● (CFS only)	●	●		●		10,000
Givens Inc. • (757) 233-4300, Chesapeake • www.givens.com	●	●	●	●		●		1,930,000
E.T. Gresham Co. Inc. • (757) 627-4583, Norfolk • www.etgresham.com	●							48,000
Guardian Storage & Van Co. (757) 826-5348, Hampton	●			●				12,000
Hampton Roads Crane & Rigging Co. (757) 595-5842, Newport News	●	●		●			●	20,000
Hampton Roads Logistics • (757) 923-4315, Suffolk • www.hamptonroadslogistics.com	●	●	●			●		103,000
Harrison's Moving & Storage Co., Inc. • (757) 397-1248, Portsmouth • www.harrisonsmoving.com	●		●	●	●	●		136,500
IMTT • (757) 485-3000, Chesapeake • www.imtt.com	●						●	1,000,000
InterChange Port Services • (540) 433-1900 Front Royal • www.interchangeco.com	●		●	●	●			48,000
International Refrigerated Port Services (IRPS) (757) 451-3211, Norfolk • www.richmondcold.com		●	●	●	●	●	●	100,000
Interstate Warehousing • (757) 887-8100, Newport News • www.tippmannngroup.com			●	●	●	●		135,000
Jones, D.D. Transfer & Warehouse Co. Inc. (757) 494-0200/0257, Chesapeake • www.ddjones.com	●	●	●	●		●	●	1,150,000
JPS Express VA, Inc. (757) 405-0460, Portsmouth	●	●	●	●		●		40,000
Lambert's Point Docks • (757) 446-4999, Norfolk • www.lambertspointdocks.com	●		●	●		●	●	1,250,000
Liberty Warehousing Inc. • (757) 220-4999, Williamsburg • www.libertywarehousing.com	●		●	●		●	●	312,000
Logistics Insight Corporation • 1-800-334-4883, ext. 2382, Norfolk • www.4linc.com	●		●	●		●		200,000

Warehousing
Continued

	Dry Storage	Bonded Storage	Distribution Services	Export Packing	Cold Storage	Segregation Services	Rail Service	Square Feet
Lucia Warehouse • (757) 558-8700, Chesapeake • www.luciatrucking@yahoo.	●		●	●		●		144,000
Lydall Distribution Services Inc. • (757) 244-8169, Newport News • www.lydall.com	●		●	●		●	●	100,000
Lynne North American • (757) 460-2226, Virginia Beach • www.lynnenorthamerican.com	●		●	●		●	●	33,000
Lynne North American & Moore Moving & Storage (757) 873-2540/873-2552, Newport News • www.lynnenorthamerican.com	●	●	●	●		●		30,000
Mar-Ja Inc. • (757) 539-8738, Suffolk • www.mar-ja.com	●	●	●	●	●	●	●	79,300
Master Movers, Inc. • (757) 393-2200, Portsmouth • www.mastermovers@mastermoversinc.hrcoxmail.com	●	●	●	●		●		50,000
Nansemond Cold Storage Co., Inc. • (757) 539-0273, Suffolk • www.nansemondcoldstg.com	●	●			●		●	535,000
Nippon Express Inc. • (757) 887-0400, Newport News • www.nipponexpressusa.com	●		●	●		●		170,000
Norchem Co. (A Taylor Co.) • (757) 855-6564, Norfolk • www.taylorcompanies.com	●		●	●		●		50,000
Norfolk Warehouse Distribution Centers (A Taylor Co.) (757) 857-6081, Norfolk • www.norfolkwarehouse.com	●	●	●	●		●	●	360,000
On Time Express Delivery Inc. • (757) 857-7752, Norfolk • www.ontimexdelivery.com	●	●	●	●		●		15,000
Pak-al USA Incorporated • (757) 923-1547 Suffolk • www.packalusa.com	●	●	●	●		●		102,000
Pinnacle International Freight Inc. • (757) 306-1211, Virginia Beach • www.pif.co.uk	●		●	●		●		8,000
Port Norfolk Commodity Warehouse Inc. (757) 460-7749, Virginia Beach • www.pncw.com	●	●	●	●		●	●	650,000
The Runnymede Corp. • (757) 422-1568, Virginia Beach • www.runnymedecorp.com	●	●						24,000
Rail Direct Transportation & Distribution Services (757) 485-3780, Chesapeake • RDTLogistics@Raildirect.net	●		●			●		40,000
S & V Warehousing Services, LLC • (757) 244-1492, 2100 56 th St., Hampton • bhoffman@svwarehouse.com or jwhoffman@svwarehouse.com	●		●	●				69,000
Samskip Inc./Warehouse • (757) 461-0038, Norfolk • www.samskip.com	●		●	●		●	●	75,000
Security Storage & Van Co/Allied Van Lines (757) 466-9000, Norfolk • www.alliedagent.com	●		●	●		●		110,000
Sewells Point Warehouse (757) 583-4577, Norfolk	●	●	●	●		●	●	22,000
Southern Express (757) 369-5280, Norfolk	●	●	●	●		●	●	30,000
Southgate Terminal Warehouse Co. • (757) 855-1934, Norfolk • www.amporbserv.com	●	●	●	●		●	●	160,000
Suffolk Cold Storage • (757) 673-4526 Suffolk • www.suffolkcoldstorage.com		●	●	●	●			80,000
Tidewater Warehouse Services (757) 485-5550, Chesapeake	●		●	●	●	●	●	150,000
Tomahawk Warehousing Services, LLC • (434) 237-5947 Lynchburg • www.tomahawkllc.com	●		●	●		●	●	400,000
Virginia Cold Storage • (757) 539-0505, Suffolk • www.vacoldstorage.com		●	●		●	●	●	150,000
Virginia International Terminals Inc. (757) 440-7000, Norfolk • www.vit.org	●		●		●	●	●	1,650,400
Virginia Storage Services • (757) 422-1568, Winchester • www.vastorage.com	●		●	●	●	●		480,000
Virginia Transfer & Storage Co. (757) 244-4975, Newport News	●	●	●	●		●		100,000
Vision Logistics Group • (757) 858-5500 Virginia Beach • www.visionlogistics.biz	●	●	●	●		●		10,000
Vision Logistics Group • (804) 915-7468 Petersburg • www.visionlogistics.biz	●	●	●	●		●		40,000
Wilson Logistics Inc. • (757) 420-5855, Chesapeake • www.wilsonlog.com	●	●	●	●		●		105,000

PORT SERVICES INFORMATION

Ship lines providing regular service from Hampton Roads
<i>(Owners/Operators–Agents)</i> AB Transatlantic American President Line Alianca Line (Hamburg Sud)–T. Parker Host, Inc. ANL Container Line (CMA–CGM) Norton Lilly International Atlantic Container Line Atlantsskip China Shipping Container Line CMA–CGM China Ocean Shipping Co. Clipper Line CSAV Emirates Shipping Line–Norton Lilly International Evergreen–Marine Corp. Gold Star Line (Zim Israel Navigation Co.) Gorton Line Hanjin Shipping Hapag Lloyd Hyundai Merchant Marine Hatsu Marine Limited (Evergreen Group) Indotrans Italia Marittima SpA (Evergreen Group) “K” Line L&C Marine MacAndrews & Co. (CMA CGM) Maersk Line Marfret Mediterranean Shipping Co. Mitsui O.S.K. Lines National Shipping Co. of Saudi Arabia Nippon Yusen Kaishi Norasia (CSAV) Orient Overseas Container Line Pan Ocean Safmarine (A.P. Moller Group) Samskip Shipping Corp of India–Strachan Shipping Agency SK Shipping Company Turkon United Arab Shipping Co. Wallenius Wilhelmsen Yang Ming Zim Intergrated Shipping Services
Inducement
Bertling Line–T. Parker Host, Inc. Eastern Car Liner–T. Parker Host, Inc. Intermarine Kent Line Rickmers Line–T. Parker Host, Inc.
Ship Offices & Agents
Anders Williams Ship Agency (757) 457-8353 201 E. City Hall Ave., Norfolk, 23510 APL Limited (757) 424-5019 2010 Old Greenbrier Road Chesapeake, 23320 • www.apl.com Alianca Lines Inc. (973) 775-5300 465 South St., Morristown, NJ 07960 www.alanca.com.br

ANL Container Line c/o Norton Lilly International
(757) 484-4979, 3800 Poplar Hill Road, Ste. AA
Chesapeake • www.anl.com.au

Atlantic Container Line (757) 518-8561
4525 S. Boulevard, Ste. 200, Virginia Beach, 23452
www.aclcargo.com

Capes Shipping Agencies, Inc. (757) 625-3658
1128 West Olney Road, Norfolk, 23507
www.capesshipping.net

Carolina Shipping Company (757) 440-2400
208 E. Plume St., Suite 250, Norfolk, 23510
Norfolk, 23505 • www.carolinashipping.com

China Shipping North America (888) 712-7811
11 Phillips Parkway, Montvale, NJ 07645
www.chinashippingna.com

CMA/CGM (America), Inc. (757) 961-2100
5701 Lake Wright Drive, Norfolk, 23502
www.cma-cgm.com

COSCO Container Lines Americas, Inc.
(757) 393-2611, 355 Crawford St., Ste.708
Porthmouth, 23704 • www.cosco.com

CSAV Agency (732) 635-2600
99 Wood Ave. South, Ste. 900
Iselin, NJ 08830 • www.csav.com

Eastern Car Liner c/o T. Parker Host (757) 627-6286
500 East Plume St., Ste. 600, Norfolk, 23510
www.ecl.co.jp

Emirates Shipping Line c/o Norton Lilly International
(757) 484-4979, 3800 Poplar Hill Road, Ste. AA
Chesapeake, 23321 • www.emiratesline.com

Evergreen Marine Corp. (757) 448-6900
621 Lynnhaven Pkwy., Suite 300
Virginia Beach, 23452 • www.evergreen-marine.com

Gold Star Line c/o Zim Integrated Shipping Services
(757) 228-1300, 5801 Lake Wright Drive
Norfolk, 23502 • www.gslltd.com.hk

Hamburg Sud North America, Inc. (973) 775-5300
465 South Street, Morristown, NJ 07960
www.hamburgsud.com

Hamburg Sud North America, Inc. (757) 393-2968
149 Chautauqua Ave., Portsmouth, 23707
www.hamburgsud.com

Hanjin Shipping (757) 233-2202
860 Greenbrier Circle, Suite 200, Chesapeake,
23320 • www.hanjin.com

Hapag Lloyd (America) Inc. (877) 605-6533
5712 Cleveland Street, Suite 200, Virginia Beach,
23462 • www.hapag-lloyd.com

Hasler & Co. (757) 625-3641
121 W. Tazewell St., Norfolk, 23510

Hyundai American Shipping Agency (972) 501-1100
222 West Las Colinas Blvd., Suite 700, Irving, TX
75039 • www.hmm21.com

Hatsu Marine Limited (757) 448-6900
621 Lynnhaven Pkwy., Suite 300, Virginia Beach,
23452 • www.hatsu-marine.com

Inchcape Shipping Services (757) 625-6145
201 East City Hall Ave., Norfolk, 23510

Indotrans (201) 560-1066
392 Main St., Wyckoff, NJ 07481 www.indotrans.com

Italia Marittima SpA (757) 448-6900
621 Lynnhaven Pkwy., Suite 300, Virginia Beach,
23452 • www.italiamarittima.it

“K” Line America Inc. (757) 747-2100
4560 South Boulevard, Suite 301, Virginia Beach,
23452 • www.kline.com

MacAndrews & Co. c/o Norton Lilly International
(757) 484-4979 3800 Poplar Hill Road, Suite AA,
Chesapeake, 23321 • www.macandrews.com

Maersk Inc. (757) 857-4800
1 Commercial Place, 20th Floor, Norfolk, 23321
www.maerskline.com

Marfret (888) 627-3738
500 E. Plume Street, Suite 220, Norfolk, 23510
www.marfret.com

Mediterranean Shipping Co. (USA) Inc. (757) 625-0132
300 E. Main St., Suite 180, Norfolk, 23510
www.msccva.ch

MOL (America) Inc. (757) 627-1130
208 E. Plume St., Suite 250, Norfolk, 23510
www.molpower.com

National Shipping Co. of Saudi Arabia c/o Carolina
Shipping Company (757) 440-2400
7737 Hampton Blvd., Building 4D, Room 204
Norfolk, 23505 • www.nscsa.com

NYK Line (North America) Inc. (201) 330-3000
300 Lighting Way, 4th & 5th Floors, Secaucus, NJ 07094
www.nykline.com

Norasia, Inc. (732) 635-2600
99 Wood Ave. South, Iselin, NJ 08830
www.csavnorasia.com

Norton Lilly International (757) 484-4979
3800 Poplar Hill Road, Suite AA, Chesapeake,
23321 • www.nortonlilly.com

OOCL (USA) Inc. (888) 888-6625
88 Pine St., 8th Floor, New York, NY 10005
www.oocl.com

OOCL (USA) Inc. (757) 440-4132
7737 Hampton Blvd., Warehouse 4D, Suite 216,
Norfolk, 23505 • www.oocl.com

Ramsey, Scarlett Agencies Inc. (757) 625-8394
201 E. City Hall Ave., Norfolk, 23510

Rickmers Linie (281) 453-7500
350 Glenborough Drive, Ste. 180, Houston, TX
77067 • www.rickmers-linie.de

Safmarine Inc. (973) 656-2600
465 South Street, 2nd Floor, Morristown, NJ
07962-1961 • www.safmarine.com

Samskip Inc. (757) 855-8817
5365 Robin Hood Road, Suite A-2, Norfolk,
23513 • www.samskip.com

Shipping Corp of India c/o Kerr Norton Strachan Agency
(757) 484-4979, 3800 Poplar Hill Road,
Suite AA, Chesapeake, 23321 • www.nortonlilly.com

T. Parker Host, Inc. (757) 627-6286
500 East Plume St., Suite 600, Norfolk, 23510
www.tparkerhost.com

Turkon America Inc. (757) 455-8200
870 N. Military Hwy., Suite 319
Norfolk, 23502 • www.turkonamerica.com

United Arab Shipping Co. (757) 420-7340
1403 Greenbrier Pkwy., Suite 550
Chesapeake, 23320 • www.uasc.com.kw

Wallenius Wilhelmsen (757) 440-7660
7737 Hampton Blvd., Bldg. 4D, Room 110
Norfolk, 23505 • www.2wglobal.com

Yang Ming c/o T. Parker Host, Inc. (757) 627-6286
500 Plume Street East, Suite 600, Norfolk,
23510 • www.ymn.com.tw

Zim American Integrated Shipping Services
(757) 228-1300, 5801 Lake Wright Drive,
Norfolk, 23502 • www.zim.com

NVOS
ABF Freight Systems, Inc. (757) 485-3284
Barthco International, Inc (757) 314-4300
CargoTrans Int'l (757) 455-6608
Cargomar USA (757) 625-3641
Carr-Go Express (757) 853-7141
CV Ocean Transport (757) 466-1170
DAMCO Maritime (757) 626-0206
Expeditors International (757) 853-7776
Fracht USA (757) 457-8388
Haslar (757) 625-3641
Hipage Co., Inc. (757) 446-1500
J.S. Connor Container Line (757) 627-3910
M&S Shipping (757) 466-8899
Nippon Express U.S.A., Inc. (757) 887-0400
Ocean World Lines (757) 422-9740
Roadway Express (757) 543-4200
Samuel Shapiro & Company, Inc. (757) 626-0512
Seamodal Transport Corporation (757) 461-6288
Shipco Transport (757) 626-3804
Votainer Consolidation Services (757) 455-6342

Feeder Services
Columbia Coastal Transport (757) 397-9203
Container Consolidation Services (757) 455-6342
Southern Overseas ExpressLine (757) 424-6560
Tri-Star Shipping (757) 858-5453

Bagging and Transfer
ARREFF Terminals, Inc. (757) 393-2730
TRANSFLO (800) 525-5743

Stevedores
Ceres Marine Terminals Inc. (757) 397-7091
CP&O, LLC (757) 640-2580
Federal Marine Terminals (Richmond) Inc. (804) 275-9248
Universal Maritime Service Corp. (757) 396-6113

Ship Chandlers
Cavalier Marine Supply Co. (757) 855-6091

Shipbuilding, Ship Repair, and Drydocks
Northrup Grumman Newport News (757) 380-2000
4101 Washington Ave.
Newport News 23607
Virginia Ship Repair Association, Inc. (757) 857-6543
150 Boush St.
Norfolk 23510

Ship and Cargo Brokers
Canamer Ocean Transport Inc. (804) 435-3323

Trucking Companies / SmartWay Port Partners
C & K Trucking, LLC (757) 382-0001, Chesapeake
Andy’s Trucking (434) 736-2429, Keysville

Export Management and Packing
Adkins Export Packing and Machinery Movers (888) 484-0020
ARREFF Terminals Inc. (757) 393-2730, Portsmouth
AWD International Inc. (757) 554-0607 Norfolk
Boggs Enterprises, Inc. (757) 490-1988, Virginia Beach
CV International, Inc. (757) 466-1170, Norfolk
Chick Packaging of Virginia (757) 595-0541
Circle International Inc. (757) 622-3373, Norfolk
Dixie Box & Crating Co. (757) 825-7520, Norfolk
Expeditors International (757) 853-7776, Norfolk
HCI Corp. (703) 463-1095, Lexington
The Hipage Co. Inc. (757) 446-1500 Norfolk
Mancon (757) 460-0879, Virginia Beach
Nippon Express U.S.A., Inc. (757) 887-0400, Newport News
Pak-Al of Virginia (757) 485-3570
Radix Group International Inc. (757) 461-1333, Norfolk
Ronson Management Corp. (757) 424-4200, Chesapeake
Samuel Shapiro & Company, Inc. (757) 626-0512, Norfolk
Schenker Inc. (757) 464-3417, Norfolk

International Divisions, Banks and Financial Institutions
Bank of America (800) 407-7842 (Richmond) (804) 788-2212
BB&T Toll Free (888) 810-8510 (Richmond) (804) 756-0259
First Virginia Bank of Tidewater (757) 628-6853
SunTrust (804) 782-7416

Financial Services
FortisTCS, LP (919) 554-2353

Consular Offices in Virginia
Location Key: (N) Norfolk, (NN) Newport News, (R) Richmond, (VB) Virginia Beach • Inquiries: (757) 446-7300 Consular Corps in Norfolk

Belgium — Mimi Lanese (757) 422-5571 **(VB)**
Brazil — Thomas P. Host, III (757) 627-6286 **(N)**
Canada — Bill Benos (804) 643-1991 **(R)**
Cyprus — Thomas Kyros (757) 481-3583 **(VB)**
Denmark — William Rachels (757) 628-5568 **(N)**
Finland — David Host (757) 627-6286 **(N)**
France — Nicole Yancey (757) 596-2544 **(NN)**
Germany — Manfred Schwartz (757) 428-2226 **(VB)**
Great Britain — *Vacant*
Iceland — John E. Holloway (757) 640-5360 **(N)**
Italy — Vito Piraino (757) 622-4898 **(N)**
Mexico — Roberto Rodriguez (757) 461-4553/4933 **(N)**
Moldova — Anton Samoila (757) 466-8899 **(N)**
Norway — Rolf A. Williams (757) 466-7300 **(N)**
Romania — Anton Samoila (757) 466-8899 **(N)**
Sweden — Rolf A. Williams (757) 466-7300 **(N)**

Terminal Designations
*Owned by the Virginia Port Authority

APM – APM Terminals
(757) 393-4071
1800 Seaboard Ave.
Portsmouth, 23707
Griff Lynch, Port Mgr.

ERT–Elizabeth River Terminals
(757) 543-0335
4100 Buell St.
Chesapeake, 23324
Bulk commodities
Owned by Kinder Morgan U.S.A. Inc.

LPD–Lambert’s Point Docks
(757) 446-1219
P.O. Box 89
Norfolk, 23501
Operated by Lambert’s Point Docks Inc.
Corine Barbour, Gen. Mgr.

*NIT–Norfolk International Terminals
(757) 440-7000
P.O. Box 1387
Norfolk, 23501
Operated by Virginia International Terminals Inc.
Gene Ferguson, Terminal Mgr.

*NNMT–Newport News Marine Terminal
(757) 440-7000
P.O. Box 1387
Norfolk, 23501
Operated by Virginia International Terminals Inc.
Jim Wade, Terminal Mgr.

NOT–Norfolk Oil Transit
(757) 622-2687
Bulk liquid tank terminal at Lambert’s Point Docks
R. Grant Narelle, President

*PMT–Portsmouth Marine Terminal
(757) 440-7000
P.O. Box 1387
Norfolk, 23501
Operated by Virginia International Terminals Inc.
Mark Wilder, Terminal Mgr.

*VIP–Virginia Inland Port
(540) 636-4200 or (800) 883-7678
P.O. Box 345, Rt. 522 & 340 N.
Front Royal, 22630-0345
Operated by Virginia International Terminals Inc.
Stan Crockett, VIP Mgr.





Virginia Port Authority
600 World Trade Center
101 West Main Street
Norfolk, VA 23510-1696

PRSTD STD
U.S. POSTAGE
PAID
RICHMOND, VA
PERMIT NO. 1899